



SRX-PRO

[Features]

- Supports up to 32 channels of video
- High Frame Rates and High Resolution Recording
- Live Mode can do both Search and Backup

SRX-PRO Digital Video Management Systems (DVMS)

[Application & Benefits]

Tailored to suit the needs of both the end-user and the system integrator, SRX-Pro offers a clear, premium resolution DVD quality picture. Complimenting its exceptional resolution quality is the ability to capture video at high frames per second. Additionally, while in live mode, SRX-Pro offers the capacity to view an astonishing 32 channels in real time at DVD quality.

Finally, SRX-Pro also provides an extraordinary, state-of-the-art capacity to search in live mode. This user-friendly feature permits clients to view previously recorded video while still in live mode. Not only can they select any of the 32 available display channels and simultaneously view the recorded video, but they can also download, store, and copy the recorded video onto a CD/DVD.

To learn more about the SRX-Pro or to schedule a live demonstration, please contact our Customer Care department today at 1.866.840.0004.

[Intelligent Features]

- Mux or composite display
- Supports internal RAID 5 storage



SRX-PRO DVMS
With up to 4 terabyte
internal RAID 5 storage.

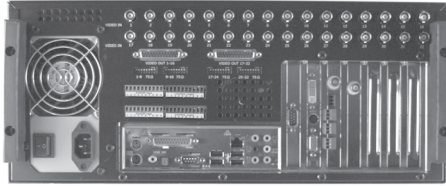


SRX-PRO 48032RR - Technical Specifications

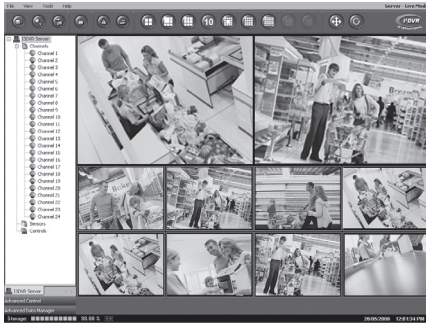
• Front Panel:



• Rear Panel:



• GUI Display:



• Options to consider:

- 550 TVL Dome Camera
- 2 internal RAID 5 storage
- Power supply

Specifications

- OS Hard Drive: 1
- Storage HDD (RAID): up to 4 TB (optional)
- Optical Drive: DVD-R/RW
- Input Devices: Keyboard and Optical Mouse
- RAID 5 Supported: Yes
- Operating System: Windows XP Pro

Connectivity

- LAN/WAN: On-board 1Gb/sec
- I/O connectors: Terminal Blocks
- VGA Connector Type: DB-15
- RS485: 4 Ports
- Maximum Transmission Speed (Analog Cam Only):
CIF(360x240): 16-32 fps; 2CIF(720x240): 8-16fps; 4CIF(720x480): 4-8fps

Video

- Analog Video Input/Loop out: 32
- Analog Video Input/Loop out: 1Vp-p, 75 Ω
- Compression: MJPEG
- IP Cameras: Not supported yet
- Resolution: 360x240(CIF), 720x240(2CIF), 720x480(4CIF)
- Max Recording Speed: CIF: 480fps; 2CIF: 240fps; 4CIF: 120fps
- Real-Time Display: 480 fps
- Main Monitor: SVGA (1024x768)
- External Monitor: 3 (BNC)
- Display Modes: 1,4,6,9,10,13,16,25,36
- Recording Modes: Time/Date (with time zone ref), sensor event, motion detection, continuous
- Local & Remote backup file format: i³ Encrypted, JPEG, BMP & AVI clips
- Video Standard: NTSC
- CPU, Graphics, RAM: Intel Processor, PCI Express, 1GB RAM DDR2
- Remote Viewing: Proprietary Software

Environmental

- Power source: 115-230VAC, 50-60Hz, 520W (auto switch)
- Dimensions: 431.8mm(W) x 577.9mm(L) x 190.5mm(H) (17"x 22.75" x 7.5")
- Approx. Weight: 13.6kg (30lb) -- Basic model
- Operating temperature: 5°C to 40°C (41°F to 104°F)
- Relative humidity: Below 90%, non-condensing

Alarm

- Number of Alarm Input/Output: 16/16
- Alarms Relay Rating: 12VDC, 500mA
- Pre-Alarm/Post-Alarm Recording: 10 Sec/10 Sec (maximum)

Certifications

- Safety Standard: uTUVc, FCC, CE, ULc

Warranty

- 3 year parts & 1 year labour & 3 year Hard Drive



©2007 i³DVR International. All rights reserved. Specifications, configurations, components and options are subject to change without notice. This data sheet may not be reproduced without permission.

www.i3dvr.com
1.866.840.0004

U.S.A. 415 Lawrence Bell Drive,
Suite 2, Williamsville,
NY, 14221

Canada 780 Birchmount Road,
Unit 16, Scarborough,
ON, M1K 5H4

SRXPRO